

## Profound geophone mounting plate for the VIBRA-series

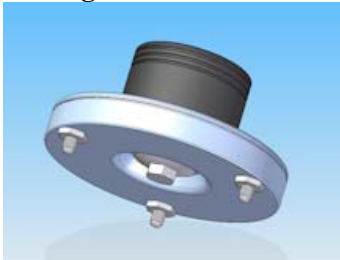
As an alternative to the tripod, Profound has developed a stainless steel mounting plate that can be placed on a floor with or without a soft top layer.

The mounting plate is delivered in a plastic suitcase and has three spikes that can be used in two positions: with the pointed side down (when used on a soft layer) or with the round side down (on hard floors).

### The geophone mounting plate has the following unique characteristics:

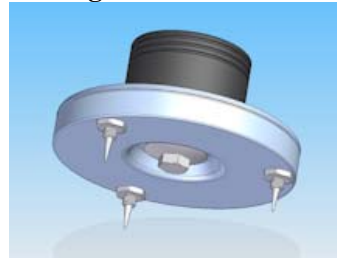
- ✓ The mounting plate fully complies with DIN 45669-2 (June 2005) and SBR – part A, attachment 3 and part B, attachment 4
- ✓ No extra tools are required: the spanner, delivered with the VIBRA, is sufficient
- ✓ High quality materials have been used: RSV-316 in combination with nickel-plated steel
- ✓ Multi-functional: can be placed on floors with or without a soft top layer
- ✓ Hardened spikes to ensure a longer life
- ✓ Spikes are protected by the mounting plate during transportation
- ✓ Geophone can be horizontally positioned with the Profound VIBRA ball joint
- ✓ Not magnetic because of the high quality stainless steel material

#### Placing on hard floors



*mounting plate with round side down*

#### Placing on covered floors



*mounting plate with pointed side down*

### Placing the mounting plate

1. Choose the side of the spikes, dependent on the surface on which the plate has to be placed, as shown above.
2. Fully screw the three spikes into the mounting plate with the spanner, which is delivered with the VIBRA. The spikes may never be used to horizontally position the mounting plate.
3. Use the spanner to fasten the geophone with the ball joint on the mounting plate.
4. Place the mounting plate with the geophone on the desired location and, if necessary, further adjust the horizontal position of the geophone with the Profound ball joint and the spanner.

### Transport of the mounting plate

The mounting plate is delivered in a plastic suitcase. For the protection of the pointed spikes and for your own safety, the mounting plate must be transported with the pointed spikes into the plate.